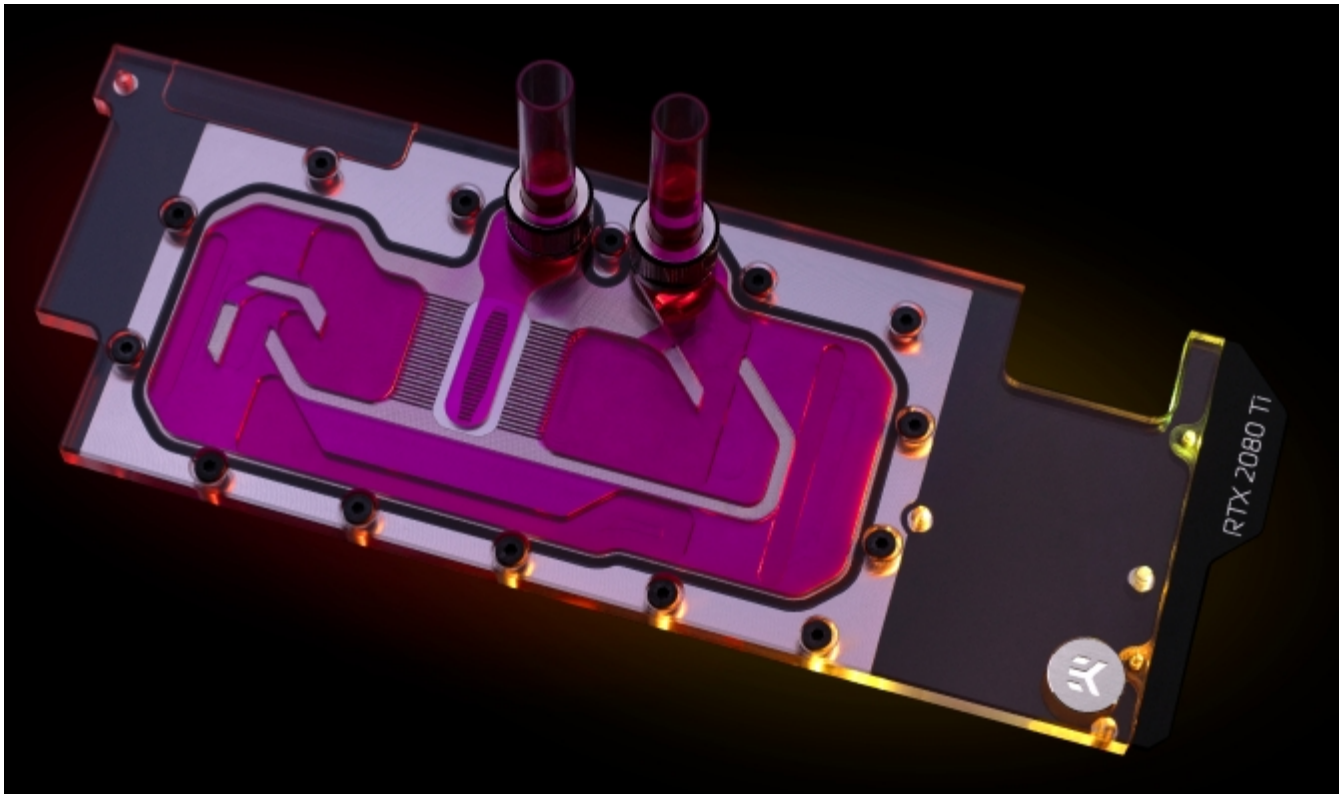


## The Narrowest GPU Water Block From EK

Written by Alice Marshall  
25 March 2020

---

EK Water Block presents a variant of the extent compatibility high-performance water block designed for Nvidia GeForce RTX 2080 Ti graphics cards based on the reference design-- the EK-Quantum Vector Direct RTX RE Ti D-RGB.



The version of the water block has the terminal removed. Instead the fittings are screwed directly into the top, allowing for a narrow enclosure and adding compatibility with space-constrained cases. The water block still uses the EK single-slot slim look, and covers the entire length of the PCB. The base of the block is CNC-milled out of nickel-plated electrolytic copper, while the top is machined out of cast acrylic. EPDM O-rings ensure the sealing, and pre-installed brass standoffs allow for easy installation.

EK-Quantum Vector series water blocks use an open split-flow cooling design characterised by low hydraulic flow restrictions. Customers can use it with weaker water pumps or pumps running on low-speed settings and still achieve top performance. The jet plate and fin structure geometry are also optimised for even distribution with minimal losses, even in reversed water flow scenarios.

## The Narrowest GPU Water Block From EK

Written by Alice Marshall  
25 March 2020

---

The EK-Quantum Vector Direct RTX RE Ti D-RGB is compatible with reference GeForce RTX 2080 Ti graphics cards. EK also offers retention backplates for further passive cooling, with a choice of either nickel-plated or black anodised variants.

Go [EK-Quantum Vector Direct RTX RE Ti D-RGB](#)